



Programming Manual



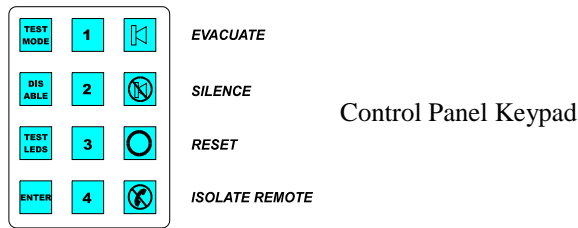
MXLK-02 Issue 1.0 January 2001

PROGRAMING INSTRUCTIONS FOR EXCEL-K RANGE OF CONTROL PANELS

INTRODUCTION

The following is a guide to the various programing options available on the EXCEL-K range of conventional and 'TWIN-WIRE' control panels.

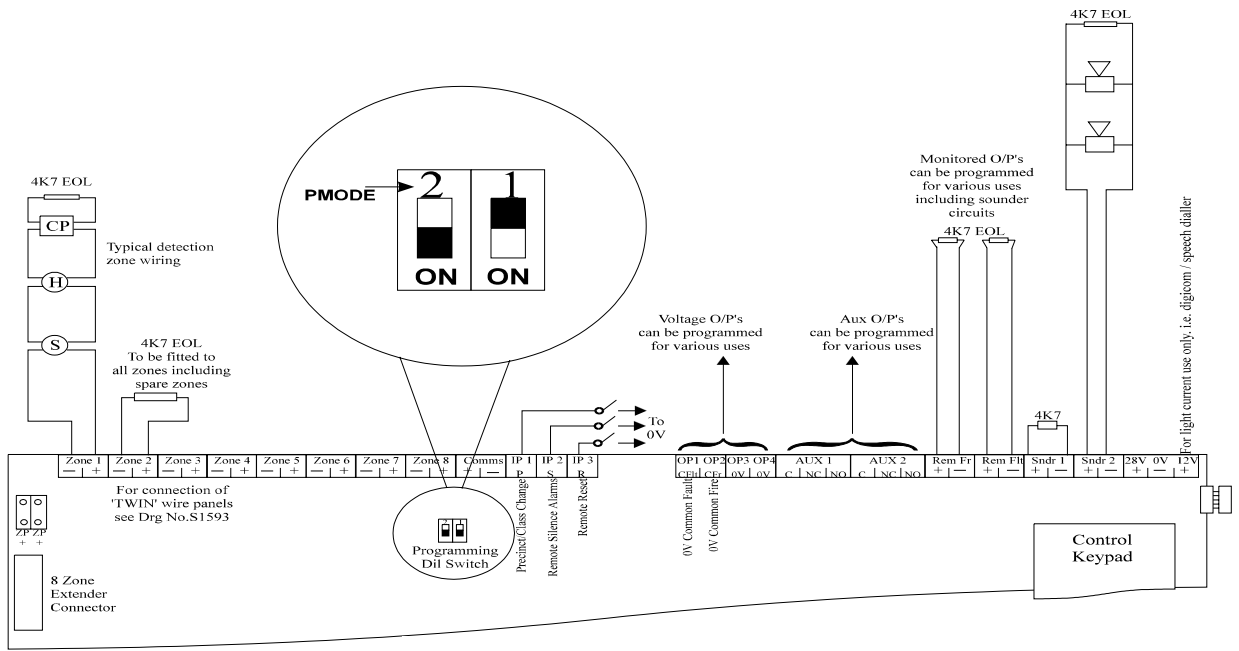
All programing is via entry of a four digit code using buttons labelled one to four on the front keypad. It should be noted that a small delay of about half a second is built into these buttons, this is to prevent misuse. Therefore each push of a button should be slow and deliberate. The panel will bleep to acknowledge each press.



Before any programing can take place you must first put the panel into 'engineering mode.' The following steps explain how to do this.

1. Move the pmode switch to the on position. This is located on the main pcb near the centre. A set of two DIL switches marked program switch. Pmode is switch 2 (left hand switch as you look at it). The on position is down.
2. Turn the 'Activate Controls ' key-switch on. Located on the front of the panel
3. Enter the 'engineers code. ' This is 1 2 3 4 by default but can be changed in the programing options.
4. Press the 'ENTER' button. The program mode LED will go steady

The panel is now in engineers mode and ready for entry of a programing option code.



PCB layout showing position of pmode DIL switch and various

<u>OPTION</u>	<u>CODE</u>	<u>PAGE</u>
PANEL OPTIONS 2123		
Set Panel Address – Only used if there are two or more repeater panels or bell driver units on the system. (if only one, NO ADDRESS IS REQUIRED)		5
Set delay time for delayed zones between 1 & 255 seconds		5
MISCELLANEOUS OPTIONS 2124		
Set fault latch – To help locate intermittent faults		6
Change OP1 & OP2 to be programable so that they may be set to respond to selected zones. (They respond as common fire and common fault by default. This cannot be changed unless they are first edited using this option)		6
Convert REM FR & REM FLT outputs to conventional sounder circuits. These outputs can only be programed if first converted to conventional sounder circuits.		6
Invert OP1 FLT to have a constant output disappearing upon fault (fail safe)		6
Invert REM FLT to have a constant output disappearing upon fault (fail safe) N.B. This output cannot be inverted if it has been converted to a conventional sounder circuit. Once inverted the output is no longer monitored.		6
Switch PSU fault inputs to be traditional switched –ve inputs to enable older style remote power supplies to be used		6
ZONE OPTIONS 3121		
Make zone non latching		7
Make zone old B.S. i.e. Short circuit = fire condition		7
Select head removal monitoring method, i.e. shottky diode base, zener diode base (Hochiki Liveline) or none		7
Make zone delayed		7
TWIN WIRE SOUNDER CIRCUIT OPTIONS 3122		
Program TWIN WIRE sounder circuits response to selected zones (TWIN WIRE-zones 1 – 16, not SNDR1 & SNDR2)		8
Program TWIN WIRE sounder circuits to monitor in EN54 or BS5839 mode	3124	9
Set “zone of origin” sounders (short cut code) - zone in alarm sounds constant, all others pulse	3311	9
Set “zonal sounders” (short cut code) - zone in alarm sounds constant, all others silent	3312	9
Program TWIN WIRE sounder circuit to operate during zone delay	3123	10
CONVENTIONAL SOUNDER CIRCUITS, REM FR & REM FLT OPTIONS		
Program SNDR1, SNDR2, REM FR or REM FLT response for selected zones	4342	11
Program SNDR1, SNDR2, REM FR or REM FLT to cancel only on reset and not on silence alarms (same as standard AUX response)	4344	12

<u>OPTION</u>	<u>CODE</u>	<u>PAGE</u>
CONVENTIONAL SOUNDER CIRCUITS, REM FR & REM FLT OPTIONS CONT'D		
Program SNDR1, SNDR2, REM FR or REM FLT to be isolatable or non isolatable when using the disable sounders mode on the front of the panel.	4341	13
Program SNDR1, SNDR2, REM FR or REM FLT to operate during a zone delay	4343	14
BELL DRIVER UNIT SOUNDER CIRCUIT OPTIONS		
	3122	
Program BELL DRIVER UNIT sounder circuits response to selected zones.		15
Set "zone of origin" sounders (short cut code) - zone in alarm sounds constant, all others pulse	3311	16
Set "zonal sounders" (short cut code) - zone in alarm sounds constant, all others silent	3312	16
Program BELL DRIVER UNIT sounder circuit to operate during zone delay	3123	17
OUTPUTS 1 – 4 & AUX OPTIONS		
Program outputs 1 – 4 or Aux 1 & 2 response to selected zones	4242	18 & 19
Program outputs 1 – 4 or Aux 1 & 2 to cancel on ' Silence Alarms ' button. (same as standard sounder circuit response)	4244	20
Program outputs 1 – 4 or Aux 1 & 2 to be isolatable or not when using ' Isolate Remote ' button on front of panel.	4241	21
Program outputs 1 – 4 or Aux 1 & 2 to respond during a zone delay	4243	22
N.B. Aux 1 & 2 will always operate common, as the relay is double pole		
OTHER OPTIONS		
Display log of last 32 events on panel	1111	23
Set panel back to default factory settings	1113	23
Change engineers code	1114	23
Program via remote PC download software	4141	24

PANEL OPTIONS

Set Panel Address (Only applies to second and above repeater or bell driver on system)

1. Move PMODE switch to the ON position.
2. Turn the 'Activate Controls' keyswitch to ON
3. Enter engineers code - 4. Press button (program mode LED goes steady)

Now enter option code

Press button until red fire LED on zone 1 is pulsing. Now use button and to illuminate the yellow fault LEDs until the desired number is reached. The address is set using a binary code, see diagram below for a detailed description. Button 1 increases the binary value by one and button 3 decreases the value by one.

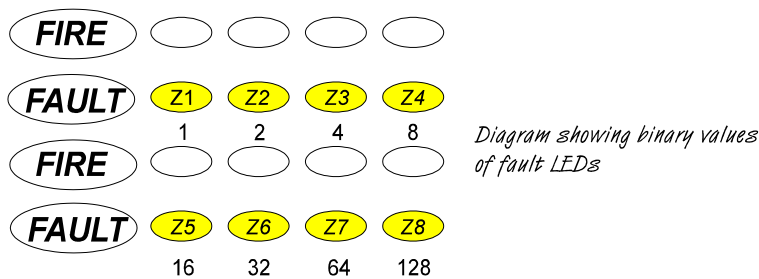
Set delay time

This option sets the delay time only, from 1 to 255 seconds. To select which zones are to be affected by the delay or which outputs are to operate during the delay, see the relevant programming options. The delay time is factory set at thirty seconds.

Follow steps 1 to 4 as above to put the panel into engineers mode:

Now enter option code

Press button until red fire LED on zone 4 is pulsing. Now use button and to illuminate the yellow fault LEDs until the desired number is reached. The delay time is set using a binary code, see diagram below for a detailed description. Button 1 increases the binary value by one second and button 3 decreases the value by one second.



E.g. to set panel to address 3, push button 1, once and fault LED 1 will illuminate, indicating address 1. Push button 1 again and Fault LED 2 will illuminate, indicating address 2. Push button one a third time and fault LED's 1 & 2 will illuminate, indicating address 3 (1 + 2 = 3).

When setting the delay time the binary values = seconds. Button 1 will increase the value by one second at a time and button 3 will decrease the value by one second at a time.

When finished press reset button once to exit current programming option. Now enter next programming option code or return PMODE switch to OFF to exit from engineer's mode.

MISCELLANEOUS OPTIONS

To set any of the following options, first set panel to engineer's mode:

1. Move PMODE switch to the ON position.
2. Turn the 'Activate Controls' keyswitch to ON
3. Enter engineers code (1 2 3 4 by default)
4. Press button (program mode LED goes steady)

Now enter option code and then press.

Press button to select the option to be changed. The options are indicated by a steady fire LED as per table below.

Once the desired fire LED is lit, use button to edit the option. The settings are indicated by the yellow fault LED. (ON = YES, OFF = NO). See the option's description in the table below.

<u>FIRE LED INDICATION</u>	<u>OPTION</u>	<u>DESCRIPTION</u>
1	Fault Latch	To help locate intermittent faults (YELLOW FAULT LED ON = Fault Latch On)
2	Make O/P 1 & 2 Programmable	Here O/P 1 & 2 are changed from normal to programmable. The active programming is configured in options 4242 & 4244 (YELLOW FAULT LED ON = O/P's programmable)
3	Convert REM-FR & REM-FLT to conventional sounder circuits.	Change the outputs to make a total of four programmable conventional sounder circuits. (YELLOW FAULT LED ON = Sounder circuits)
4	Invert Fault O/P 1	Output 1 can be inverted to have a constant output disappearing upon fault (fail safe). (YELLOW FAULT LED ON = Inverted)
5	Invert REM FLT	Remote fault output (monitored) can be inverted to have constant output disappearing upon fault (failsafe). (YELLOW FAULT LED ON = inverted)
6	PSU Fault I/P Off	These can be switched to traditional switched -ve inputs to enable older style remote power supplies to be used. (YELLOW FAULT LED ON = Old Style)

When finished press reset button once to exit current programming option. Now enter next programming option code or return PMODE switch to OFF to exit from engineer's mode.

ZONE OPTIONS

To set any of the following options, first set panel to engineer's mode:

1. Move PMODE switch to the ON position.
2. Turn the 'Activate Controls' keyswitch to ON
3. Enter engineers code ? ? ? ? (1 2 3 4 by default)
4. Press ENTER button (program mode LED goes steady)

Now enter option code 3 1 2 1 and then press. ENTER

Press button 2 to select the option to be changed. The options are indicated by a steady fire LED as per table below. Then proceed to zone edit section.

Zone Edit

<u>FIRE LED IN-DICATION</u>	<u>OPTION</u>	<u>DESCRIPTION</u>
1	Fire Latch	Set zone to be latching or non latching. In zone edit , YELLOW FAULT LED ON = Latching, OFF = Non Latching
2	Short Circuit = fire	Set zone to monitor as old B.S. i.e a short circuit = a fire condition. In zone edit YELLOW FAULT LED ON = Old B.S
3	Detector Removal Monitoring Method	Select method of detector removal monitoring for zone, i.e. shottky diode base, zener diode base (Hochiki Liveline) or no monitoring. In zone edit YELLOW FAULT LED ON = Shottky Diode, PULSING = Zener Diode, OFF = No Monitoring. NOT AVAILABLE ON TWIN WIRE PANELS
4	Delayed Zone	Select zone to be delayed. To set the delay time see Panel Options 2123. In zone edit YELLOW FAULT LED ON = Zone Delayed

Once the relevant fire LED is lit for the desired option , press ENTER You will now see zone one fire LED pulsing, indicating that zone one can be edited.

Now press button 2 to select which zone is to be to be edited for the chosen option.(each press will move to the next zone in turn and then back to zone 1).

When the desired zone fire LED is pulsing use button 1 to change the status of the zone. The setting is indicated by the fault LED as per the above table.(each press will turn the fault LED on and then off).

Repeat the above process using buttons 2 and then 1 to edit each zone in turn for the chosen option. To select another of the options in the above table press ENTER once to return to "option selection"(steady fire LED) Then use button 2 to select the next option. Then repeat the Zone Edit procedure from the beginning ENTER (press ENTER etc.....)

When finished press reset button once to exit current programing option. Now enter next programing option code or return PMODE switch to OFF to exit from engineer's mode.

TWIN WIRE SOUNDER CIRCUIT OPTIONS

(A “TWIN WIRE SOUNDER CIRCUIT” RELATES ONLY TO THE SOUNDERS THAT ARE CONNECTED TO ZONES 1 – 16 ON THE TWIN WIRE VERSION OF THE EXCEL CONTROL PANEL)

To set the following option, first set panel to engineer’s mode:

1. Move PMODE switch to the ON position.
2. Turn the ‘Activate Controls’ keyswitch to ON
3. Enter engineers code **?** **?** **?** **?** (1 2 3 4 by default)
4. Press **ENTER** button (program mode LED goes steady)

Program sounder responses on TWIN WIRE detection / sounder circuit.

Enter option code **3** **1** **2** **2** and then press. **ENTER**

This option allows you to program each TWIN WIRE sounder circuit (zone 1– 16, NOT SNDR1 & SNDR2) to respond in different ways to selected zones. For example, program the sounders on TWIN WIRE sounder / detection zone 1 to pulse if detection zones 1 & 3 go into alarm, to not respond if zone 5 goes into alarm and sound constant for all others, etc....

First select the TWIN WIRE sounder circuit to be edited then proceed to Zone Edit to program how this circuit should respond to each zone in turn (sound constant, pulse or not respond).

Press button **2** to select the sounder circuit to be edited. The sounder circuits are indicated by a steady fire LED. I.E zone 1 fire LED relates to the sounders on TWIN WIRE zone 1. Then proceed to zone edit section (below).

Zone Edit

Once the relevant fire LED is lit for the desired sounder circuit , press **ENTER** You will now see zone one fire LED pulsing, indicating that you are editing how the selected sounder circuit should respond for zone one.

Now press button **2** to select the zone to be edited for this sounder circuit (each press will move to the next zone in turn and then back to zone 1).

When the desired zone, fire LED is pulsing, use button **1** to change the sounder circuit response for this zone. The setting is indicated by the fault LED as per below.

FAULT LED ON = SOUNDERS RING STEADY
FAULT LED OFF = SOUNDERS DO NOT RING
FAULT LED PULSING = SOUNDERS PULSE.

Each press will turn the fault LED on, off and then pulsing.

Repeat the above process using buttons **2** and then **1** to change the desired response on all zones for this sounder circuit.

To select another sounder circuit press **ENTER** once to return to sounder circuit selection (steady fire LED) and use button **2** to select the next sounder circuit to be edited.

Then repeat Zone Edit procedure from the beginning.

When finished press reset button once to exit current programing option. Now enter next programing option code or return PMODE switch to OFF to exit from engineer’s mode.

TWIN WIRE SOUNDER CIRCUIT OPTIONS CONT'D

(A "TWIN WIRE SOUNDER CIRCUIT" RELATES ONLY TO THE SOUNDERS THAT ARE CONNECTED TO ZONES 1 – 16 ON THE TWIN WIRE VERSION OF THE EXCEL CONTROL PANEL)

To set any of the following options, first set panel to engineer's mode:

1. Move PMODE switch to the ON position.
2. Turn the 'Activate Controls' keyswitch to ON
3. Enter engineers code **?** **?** **?** **?** (1 2 3 4 by default)
4. Press **ENTER** button (program mode LED goes steady)

Program TWIN WIRE sounder circuits to monitor in EN54 or BS5839 mode.

Enter option code **3** **1** **2** **4** and then press **ENTER**

This option selects whether the TWIN WIRE sounder circuit monitors in EN54 or BS5839 mode. In EN54 mode (default factory setting) the panel monitors all circuits for fire and fault whilst sounders are operating; BS5839 does not. A slight interruption to sounder operation may be noticed in EN54 mode.

Press button **2** to select the sounder circuit to be edited. The sounder circuits are indicated by a pulsing fire LED. I.E. zone 1 fire LED relates to the sounders on TWIN WIRE zone 1. Each press will move to the next bell circuit in turn and then back to 1.

Once the relevant fire LED is pulsing for the desired circuit, press button **1** to change the monitoring mode. The setting is indicated by the fault LED as per below.

FAULT LED ON = EN54 operation

FAULT LED OFF = BS5839 operation Each press will turn the fault LED on and then off.

Set 'Zone of Origin' sounders – short cut code.

This is a short cut code to program sounders to be continuous in zone of detection, all others pulse.

Follow steps 1 – 4 as above to put the panel into engineers mode:

Now enter option code **3** **3** **1** **1** and then press **ENTER**

This operation can be verified by checking sounder outputs programing in option 3122

Set 'Zonal Sounders' - short cut code.

This is a short cut code to program sounders to be continuous in zone of detection, all others silent.

Follow steps 1 – 4 as above to put the panel into engineers mode:

Now enter option code **3** **3** **1** **2** and then press **ENTER**

When finished press reset button once to exit current programing option. Now enter next programing option code or return PMODE switch to OFF to exit from engineer's mode.

TWIN WIRE SOUNDER CIRCUIT OPTIONS CONT'D

(A "TWIN WIRE SOUNDER CIRCUIT" RELATES ONLY TO THE SOUNDERS THAT ARE CONNECTED TO ZONES 1 – 16 ON THE TWIN WIRE VERSION OF THE EXCEL CONTROL PANEL)

To set the following option, first set panel to engineer's mode:

1. Move PMODE switch to the ON position.
2. Turn the 'Activate Controls' keyswitch to ON
3. Enter engineers code - 4. Press button (program mode LED goes steady)

Program TWIN WIRE sounder circuits to operate during zone delay.

Enter option code

If a delayed zone is programed it is possible to operate TWIN WIRE sounder circuits whilst the delay timer is running to provide a two stage effect for delayed zones.

Press button to select the sounder circuit to be edited. The sounder circuits are indicated by a pulsing fire LED. I.E. zone 1 fire LED relates to the sounders on TWIN WIRE zone 1. Each press will move to the next bell circuit in turn and then back to 1.

Once the relevant fire LED is pulsing for the desired sounder circuit, press button to select how the sounders on this zone should respond during the zone delay. The type of response is indicated by the fault LED, as per below.

FAULT LED ON = SOUNDERS RING STEADY
FAULT LED OFF = SOUNDERS DO NOT RING
FAULT LED PULSING = SOUNDERS PULSE

Each press will turn the fault LED on, off and then pulsing.

Repeat the above steps using buttons 2 and then 1 to select all required sounders to respond during zone delay.

When finished press reset button once to exit current programing option. Now enter next programing option code or return PMODE switch to OFF to exit from engineer's mode.

CONVENTIONAL SOUNDER CIRCUIT OPTIONS

To set the following option, first set panel to engineer's mode:

1. Move PMODE switch to the ON position.
2. Turn the 'Activate Controls' keyswitch to ON
3. Enter engineers code ? ? ? ? (1 2 3 4 by default)
4. Press ENTER button (program mode LED goes steady)

Program conventional sounder circuit responses to selected zones

Enter option code 4 3 4 2 and then press. ENTER

In factory set operation, sounder circuits SNDR1 & SNDR2 are common and will operate with any detection zone in alarm. These can be changed together with monitored outputs REM FR & REM FLT to operate, pulse or not operate for selected zones. To convert REM FR & REM FLT to conventional sounder circuits, first see option 3 in code 2124.

First select the conventional sounder circuit to be edited, then proceed to Zone Edit to program how this circuit should respond to each zone in turn.

Press button 2 to select the sounder circuit to be edited. The sounder circuits are indicated by a steady fire LED, as per below. Then proceed to zone edit section.

ZONE 1 FIRE LED = REM FR (cct1)
 ZONE 2 FIRE LED = REM FLT (cct2)
 ZONE 3 FIRE LED = SNDR1 (cct3)
 ZONE 4 FIRE LED = SNDR2 (cct4)

Zone Edit

Once the relevant fire LED is lit for the desired sounder circuit, press ENTER You will now see zone one fire LED pulsing, indicating that the selected sounder circuit can be edited for zone one.

Now use button 2 to select the zone to be edited.(each press will move to the next zone in turn and then back to zone 1).

When the fire LED for the desired zone is pulsing, use button 1 to change the sounder circuit response for this zone. The response type is indicated by the fault LED as per below.

FAULT LED ON = STEADY FAULT LED OFF = NO RESPONSE FAULT LED PULSING = PULSING.

Each press will turn the fault LED on, off and then pulsing.

Repeat the above process using buttons 2 and then 1 to change the desired response on all zones for this sounder circuit.

To select another sounder circuit press ENTER once to return to sounder circuit selection (steady fire LED) and use button 2 to select the next sounder circuit to be edited.

Then repeat Zone Edit procedure from the beginning.

When finished press reset button once to exit current programing option. Now enter next programing option code or return PMODE switch to OFF to exit from engineer's mode.

CONVENTIONAL SOUNDER CIRCUIT OPTIONS

To set the following option, first set panel to engineer's mode:

1. Move PMODE switch to the ON position.
2. Turn the 'Activate Controls' keyswitch to ON
3. Enter engineers code - 4. Press button (program mode LED goes steady)

Program cancel method for monitored o/p's SNDR1 & 2, REM FR & REM FLT

Enter option code

In factory set operation, sounder circuits SNDR1 & SNDR2 will change back to their quiescent state when 'silence alarms' is activated. Likewise REM FR & REM FLT will only cancel upon 'reset'. These four outputs can be programed to cancel for either button operation. **N.B** REM FR & REM FLT outputs can only be programed if they have first been converted to conventional sounder circuits using option 3 in code 2124. If they are not to be used as sounder circuits then they cannot be programed in this way.

If REM FR & REM FLT outputs have not been converted to sounder circuits you will see zone 3 fire LED pulsing (SNDR1). If they have been converted you will see zone 1 fire LED pulsing (REM FR).

Press button to select the monitored output to be edited. The outputs are indicated by a pulsing fire LED as per below. Each press will move the LED to the next programable output in turn and then back to the beginning.

ZONE 1 FIRE LED = REM FR (cct1)
ZONE 2 FIRE LED = REM FLT (cct2)
ZONE 3 FIRE LED = SNDR1 (cct3)
ZONE 4 FIRE LED = SNDR2 (cct4)

When the desired zone, fire LED is pulsing, use button 1 to change the cancel method for this monitored output. The settings are indicated by the fault LED as per below.

FAULT LED ON = Cancel on 'silence alarms' (factory default)
FAULT LED OFF = Cancel on reset only.

Each press will turn the fault LED on, and then off.

Repeat this process using buttons 2 and then 1 to program all required monitored outputs.

When finished press reset button once to exit current programing option. Now enter next programing option code or return PMODE switch to OFF to exit from engineer's mode.

CONVENTIONAL SOUNDER CIRCUIT OPTIONS

To set the following option, first set panel to engineer's mode:

1. Move PMODE switch to the ON position.
2. Turn the 'Activate Controls' keyswitch to ON
3. Enter engineers code ? ? ? ? (1 2 3 4 by default)
4. Press ENTER button (program mode LED goes steady)

Program monitored o/p's SNDR1 & 2, REM FR & REM FLT to be non isolatable

Enter option code 4 3 4 1 and then press. ENTER

In factory set operation, sounder circuits SNDR1 & SNDR2 can be isolated using "disable sounders" mode on front of panel. Likewise REM FR & REM FLT will not be isolated if this mode is activated. These four outputs can be programed to be isolatable or non isolatable with "disable sounders" mode. **N.B** REM FR & REM FLT outputs can only be programed if they have first been converted to conventional sounder circuits using option 3 in code 2124. If they are not to be used as sounder circuits then they cannot be programed in this way.

If REM FR & REM FLT outputs have not been converted to sounder circuits you will see zone 3 fire LED pulsing (SNDR1). If they have been converted you will see zone 1 fire LED pulsing (REM FR).

Press button 2 to select the monitored output to be edited. The outputs are indicated by a pulsing fire LED as per below. Each press will move the LED to the next programable output in turn and then back to the beginning.

ZONE 1 FIRE LED = REM FR (cct1)
 ZONE 2 FIRE LED = REM FLT (cct2)
 ZONE 3 FIRE LED = SNDR1 (cct3)
 ZONE 4 FIRE LED = SNDR2 (cct4)

When the desired zone, fire LED is pulsing, use button 1 to change whether the monitored output can be isolated. The settings are indicated by the fault LED as per below.

FAULT LED ON = Output will be isolated during "disable sounders"
 FAULT LED OFF = Output will not be isolated during "disable sounders".

Each press will turn the fault LED on, and then off.

Repeat this process using buttons 2 and then 1 to program all required monitored outputs.

When finished press reset button once to exit current programing option. Now enter next programing option code or return PMODE switch to OFF to exit from engineer's mode.

CONVENTIONAL SOUNDER CIRCUIT OPTIONS

To set the following option, first set panel to engineer's mode:

1. Move PMODE switch to the ON position.
2. Turn the 'Activate Controls' keyswitch to ON
3. Enter engineers code ? ? ? ? (1 2 3 4 by default)
4. Press ENTER button (program mode LED goes steady)

Program monitored o/p's SNDR1 & 2, REM FR & REM FLT to operate during zone delay.

Enter option code 4 3 4 3 and then press. ENTER

If a delayed zone is programed it is possible to operate the four monitored outputs whilst the delay timer is running to provide a 2 stage effect for delayed zones. **N.B** REM FR & REM FLT outputs can only be programed if they have first been converted to conventional sounder circuits using option 3 in code 2124. If they are not to be used as sounder circuits then they cannot be programed in this way.

If REM FR & REM FLT outputs have not been converted to sounder circuits you will see zone 3 fire LED pulsing (SNDR1). If they have been converted you will see zone 1 fire LED pulsing (REM FR).

Press button 2 to select the monitored output to be edited. The outputs are indicated by a pulsing fire LED as per below. Each press will move the LED to the next programable output in turn and then back to the beginning.

ZONE 1 FIRE LED = REM FR (cct1)
 ZONE 2 FIRE LED = REM FLT (cct2)
 ZONE 3 FIRE LED = SNDR1 (cct3)
 ZONE 4 FIRE LED = SNDR2 (cct4)

When the desired zone, fire LED is pulsing, use button 1 to change the monitored output's response during the zone delay. The settings are indicated by the fault LED as per below.

FAULT LED ON = SOUNDERS RING STEADY
 FAULT LED OFF = SOUNDERS DO NOT RING.
 FAULT LED PULSING = SOUNDERS PULSE

Each press will turn the fault LED on, and then off.

Repeat this process using buttons 2 and then 1 to program all required monitored outputs.

When finished press reset button once to exit current programing option. Now enter next programing option code or return PMODE switch to OFF to exit from engineer's mode.

BELL DRIVER UNIT SOUNDER CIRCUIT OPTIONS

(A “BELL DRIVER UNIT SOUNDER CIRCUIT” RELATES ONLY TO THE SOUNDERS THAT ARE CONNECTED TO A SEPARATE BELL DRIVER UNIT (BD-EXCEL-# or FCRP-BDXLK-#)

To set the following option, first set panel to engineer’s mode:

1. Move PMODE switch to the ON position.
2. Turn the ‘Activate Controls’ keyswitch to ON
3. Enter engineers code **?** **?** **?** **?** (1 2 3 4 by default)
4. Press **ENTER** button (program mode LED goes steady)

Program sounder responses on BELL DRIVER UNIT.

Enter option code **3** **1** **2** **2** and then press. **ENTER**

This option allows you to program each BELL DRIVER UNIT sounder circuit to respond in different ways to selected zones. For example, program the sounders on BELL DRIVER UNIT sounder circuit 1 to pulse if detection zones 1 & 3 go into alarm, to not respond if zone 5 goes into alarm and sound constant for all others, etc....

First select the BELL DRIVER UNIT sounder circuit to be edited then proceed to Zone Edit to program how this circuit should respond to each zone in turn (sound constant, pulse or not respond).

Press button **2** to select the sounder circuit to be edited. The sounder circuits are indicated by a steady fire LED. I.E zone 1 fire LED relates to the sounders on BELL DRIVER UNIT sounder circuit 1. Then proceed to zone edit section (below).

Zone Edit

Once the relevant fire LED is lit for the desired sounder circuit , press **ENTER** You will now see zone one fire LED pulsing, indicating that you are editing how the selected sounder circuit should respond for zone one.

Now press button **2** to select the zone to be edited for this sounder circuit (each press will move to the next zone in turn and then back to zone 1).

When the desired zone, fire LED is pulsing, use button **1** to change the sounder circuit response for this zone. The setting is indicated by the fault LED as per below.

FAULT LED ON = SOUNDERS RING STEADY
FAULT LED OFF = SOUNDERS DO NOT RING
FAULT LED PULSING = SOUNDERS PULSE.

Each press will turn the fault LED on, off and then pulsing.

Repeat the above process using buttons **2** and then **1** to change the desired response on all zones for this sounder circuit.

To select another sounder circuit press **ENTER** once to return to sounder circuit selection (steady fire LED) and use button **2** to select the next sounder circuit to be edited.

Then repeat Zone Edit procedure from the beginning.

When finished press reset button once to exit current programing option. Now enter next programing option code or return PMODE switch to OFF to exit from engineer’s mode.

BELL DRIVER UNIT SOUNDER CIRCUIT OPTIONS CONT'D

(A "BELL DRIVER UNIT SOUNDER CIRCUIT" RELATES ONLY TO THE SOUNDERS THAT ARE CONNECTED TO A SEPARATE BELL DRIVER UNIT (BD-EXCEL-# or FCRP-BDXLK-#)

To set any of the following options, first set panel to engineer's mode:

1. Move PMODE switch to the ON position.
2. Turn the 'Activate Controls' keyswitch to ON
3. Enter engineers code **?** **?** **?** **?** (1 2 3 4 by default)
4. Press **ENTER** button (program mode LED goes steady)

Set 'Zone of Origin' sounders – short cut code.

This is a short cut code to program sounders to be continuous in zone of detection, all others pulse.

Follow steps 1 – 4 as above to put the panel into engineers mode:

Now enter option code **3** **3** **1** **1** and then press **ENTER**

This operation can be verified by checking sounder outputs programing in option 3122

Set 'Zonal Sounders' - short cut code.

This is a short cut code to program sounders to be continuous in zone of detection, all others silent.

Follow steps 1 – 4 as above to put the panel into engineers mode:

Now enter option code **3** **3** **1** **2** and then press **ENTER**

This option can be verified by checking sounder outputs programing in option 3122

When finished press reset button once to exit current programing option. Now enter next programing option code or return PMODE switch to OFF to exit from engineer's mode.

BELL DRIVER UNIT SOUNDER CIRCUIT OPTIONS CONT'D

(A "BELL DRIVER UNIT SOUNDER CIRCUIT" RELATES ONLY TO THE SOUNDERS THAT ARE CONNECTED A SEPARATE BELL DRIVER UNIT (BD-EXCEL-# or FCRP-BDXLK-#)

To set the following option, first set panel to engineer's mode:

1. Move PMODE switch to the ON position.
2. Turn the 'Activate Controls' keyswitch to ON
3. Enter engineers code - 4. Press button (program mode LED goes steady)

Program BELL DRIVER UNIT sounder circuits to operate during zone delay.

Enter option code

If a delayed zone is programed it is possible to operate BELL DRIVER UNIT sounder circuits whilst the delay timer is running to provide a two stage effect for delayed zones.

Press button to select the sounder circuit to be edited. The sounder circuits are indicated by a pulsing fire LED. I.E. zone 1 fire LED relates to the sounders on BELL DRIVER UNIT sounder circuit 1. Each press will move to the next bell circuit in turn and then back to 1.

Once the relevant fire LED is pulsing for the desired sounder circuit, press button to select how the sounders on this zone should respond during the zone delay. The type of response is indicated by the fault LED, as per below.

FAULT LED ON = SOUNDERS RING STEADY
FAULT LED OFF = SOUNDERS DO NOT RING
FAULT LED PULSING = SOUNDERS PULSE

Each press will turn the fault LED on, off and then pulsing.

Repeat the above steps using buttons 2 and then 1 to select all required sounders to respond during zone delay.

When finished press reset button once to exit current programing option. Now enter next programing option code or return PMODE switch to OFF to exit from engineer's mode.

OUTPUTS 1 – 4 & AUX OPTIONS

To set the following option, first set panel to engineer's mode:

1. Move PMODE switch to the ON position.
2. Turn the 'Activate Controls' keyswitch to ON
3. Enter engineers code (1 2 3 4 by default)
4. Press button (program mode LED goes steady)

Program outputs 1 – 4 & AUX responses to selected zones

Enter option code and then press.

Outputs labelled OP1 – OP4 & Relays AUX1 and AUX2 can be programed to respond to any combination of fire zones going into alarm. OP1 & OP2 are normally used as common fault and fire outputs. In order to program their responses to selected zones you must first make these outputs programable using option 2 in code 2124. OP3 & OP4 normally have no response until programed.

First select the output or Aux to be edited, then proceed to Zone Edit to program how this output should respond to each zone in turn.

Press button to select the output to be edited. The outputs are indicated by a steady fire LED, as per below. Then proceed to zone edit section.

ZONE 1 FIRE LED = OP1
ZONE 2 FIRE LED = OP2
ZONE 3 FIRE LED = OP3
ZONE 4 FIRE LED = OP4
ZONE 5 FIRE LED = AUX1 & AUX2

Aux 1 & 2 will only activate common as the relay is double pole.

If OP1 & OP2 have not been made programable using option 2 in code 2124, button 2 will only toggle the fire LED's between zones 3, 4 & 5.

Zone Edit

Once the relevant fire LED is lit for the desired sounder circuit , press You will now see zone one fire LED pulsing, indicating that the selected output can be edited for zone one.

Now press button 2 to select the zone to be edited.(each press will move to the next zone in turn and then back to zone 1).

When the fire LED for the desired zone is pulsing, use button 1 to change the output response for this zone.

The response type is indicated by the fault LED as per over page.....


OUTPUTS 1 – 4 & AUX OPTIONS CONT'D

Program outputs 1 – 4 & AUX responses to selected zones cont'd

.....Fault LED indications

FAULT LED ON = OUTPUT CONSTANT
FAULT LED OFF = OUTPUT NO RESPONSE
FAULT LED PULSING = OUPUT INTERMITTENT

Repeat the above process using buttons 2 and then 1 to change the desired response on all zones for this output.

To select another output press  once to return to output selection (steady fire LED) and use button 2 to select the next output to be edited.

Then repeat Zone Edit procedure from the beginning.

When finished press reset button once to exit current programing option. Now enter next programing option code or return PMODE switch to OFF to exit from engineer's mode.

OUTPUTS 1 – 4 & AUX OPTIONS CONT'D

To set the following option, first set panel to engineer's mode:

1. Move PMODE switch to the ON position.
2. Turn the 'Activate Controls' keyswitch to ON
3. Enter engineers code (1 2 3 4 by default)
4. Press button (program mode LED goes steady)

Program cancel method for outputs 1 – 4 & Aux

Enter option code and then press.

In factory set operation, outputs 1 – 4 & Aux will change back to their quiescent state when 'reset' is activated. These outputs can be programmed to cancel on activation of 'silence alarms' button.

N.B OP1 & OP2 can only be programmed if they have first been made programable using option 2 in code 2124.

Aux 1 & 2 will only activate common as the relay is double pole.

Press button to select the output to be edited. The outputs are indicated by a pulsing fire LED as per below. Each press will move the LED to the next programable output in turn and then back to the beginning.

If OP1 & OP2 have not been made programable using option 2 in code 2124, button 2 will only toggle the fire LED's between zones 3, 4 & 5.

ZONE 1 FIRE LED = OP1
ZONE 2 FIRE LED = OP2
ZONE 3 FIRE LED = OP3
ZONE 4 FIRE LED = OP4
ZONE 5 FIRE LED = AUX1 & AUX2

When the desired zone, fire LED is pulsing, use button 1 to change the cancel method for this output. The settings are indicated by the fault LED as per below.

FAULT LED OFF = Output cancels on 'reset' (factory default)
FAULT LED ON = Output cancels on 'silence alarms'.

Each press will turn the fault LED on, and then off.

Repeat this process using buttons 2 and then 1 to program all required outputs.

When finished press reset button once to exit current programing option. Now enter next programing option code or return PMODE switch to OFF to exit from engineer's mode.

OUTPUTS 1 – 4 & AUX OPTIONS CONT'D

To set the following option, first set panel to engineer's mode:

1. Move PMODE switch to the ON position.
2. Turn the 'Activate Controls' keyswitch to ON
3. Enter engineers code - 4. Press button (program mode LED goes steady)

Program outputs 1 – 4 & Aux to be isolatable or non isolatable

Enter option code and then press.

This option selects whether outputs 1 – 4 & Aux can be isolated using the 'isolate remote' button on the front of the panel. In factory set operation, outputs 1 – 4 will not be isolated but Aux 1 & 2 will be isolated when the 'isolate remote' button is operated.

N.B OP1 & OP2 can only be programed if they have first been made programable using option 2 in code 2124.

Aux 1 & 2 will only activate common as the relay is double pole.

Press button to select the output to be edited. The outputs are indicated by a pulsing fire LED as per below. Each press will move the LED to the next programable output in turn and then back to the beginning.

If OP1 & OP2 have not been made programable using option 2 in code 2124, button 2 will only toggle the fire LED's between zones 3, 4 & 5.

ZONE 1 FIRE LED = OP1
ZONE 2 FIRE LED = OP2
ZONE 3 FIRE LED = OP3
ZONE 4 FIRE LED = OP4
ZONE 5 FIRE LED = AUX1 & AUX2

When the desired zone, fire LED is pulsing, use button 1 to select whether this ouput is isolatable. The settings are indicated by the fault LED as per below.

FAULT LED ON = Output will be isolated with operation of 'isolate remote' button
FAULT LED OFF = Output will not be isolated with operation of 'isolate remote' button.

Each press will turn the fault LED on, and then off.

Repeat this process using buttons 2 and then 1 to program all required outputs.

When finished press reset button once to exit current programing option. Now enter next programing option code or return PMODE switch to OFF to exit from engineer's mode.

OUTPUTS 1 – 4 & AUX OPTIONS CONT'D

To set the following option, first set panel to engineer's mode:

1. Move PMODE switch to the ON position.
2. Turn the 'Activate Controls' keyswitch to ON
3. Enter engineers code - 4. Press button (program mode LED goes steady)

Program outputs 1 – 4 & Aux to respond during a zone delay

Enter option code and then press.

If a delayed zone is programed it is possible to operate outputs 1 – 4 & Aux whilst the delay timer is running to provide a 2 stage effect for delayed zones.

N.B OP1 & OP2 can only be programed if they have first been made programable using option 2 in code 2124.

Aux 1 & 2 will only activate common as the relay is double pole.

Press button to select the output to be edited. The outputs are indicated by a pulsing fire LED as per below. Each press will move the LED to the next programable output in turn and then back to the beginning.

If OP1 & OP2 have not been made programable using option 2 in code 2124, button 2 will only toggle the fire LED's between zones 3, 4 & 5.

ZONE 1 FIRE LED = OP1
ZONE 2 FIRE LED = OP2
ZONE 3 FIRE LED = OP3
ZONE 4 FIRE LED = OP4
ZONE 5 FIRE LED = AUX1 & AUX2

When the desired zone, fire LED is pulsing, use button 1 to select the response of this output during the zone delay. The settings are indicated by the fault LED as per below.

FAULT LED ON = OUTPUT CONSTANT
FAULT LED OFF = OUTPUT NO RESPONSE
FAULT LED PULSING = OUPUT INTERMITTENT

Each press will turn the fault LED on, and then off.

Repeat this process using buttons 2 and then 1 to program all required outputs.

When finished press reset button once to exit current programing option. Now enter next programing option code or return PMODE switch to OFF to exit from engineer's mode.

OTHER OPTIONS

To set any of the following options, first set panel to engineer's mode:

1. Move PMODE switch to the ON position.
2. Turn the 'Activate Controls' keyswitch to ON
3. Enter engineers code (1 2 3 4 by default)
4. Press button (program mode LED goes steady)

Display event log.

Enter option code and then press

This option allows you to view the last 32 events by way of the panel LED's.

Press to scroll through the events, (last event is first view)

Display Guide

All LEDs illuminated, indicates operation of the Reset Button

Steady Common Fire LEDs, indicates operation of the Silence Alarms Button

All other LEDs indicate as their labelled function

While in this option enter 1121 and press ENTER to clear log.

Set panel back to default factory settings.

This is a short cut code to set all programing back to the factory default settings. (Except engineers code)

Follow steps 1 – 4 as above to put the panel into engineers mode:

Now enter option code and then press

Change engineers code.

This option enables you to change the engineers access code for step 3 of engineers mode above.

WARNING: If you forget the new code there is no way of entering into engineers mode to access any programing options. Be careful when using this option the only alternative is a new PCB

Follow steps 1 – 4 as above to put the panel into engineers mode:

Now enter option code and then press

All Fire LEDs will Pulse: Enter Existing Code (1, 2, 3, by default) and press

OTHER OPTIONS CONT'D

Program panel via remote PC download software.

BEFORE DOWNLOADING OR UPLOADING PROGRAMING, IT IS IMPORTANT TO DISCONNECT ANY REPEATERS OR BELL DRIVER UNITS ON THE SYSTEM. FAILURE TO DO THIS WILL RESULT IN THE FILE BEING CORRUPTED.

Connect adaptor between PC or Laptop and control panel as per Fig 1

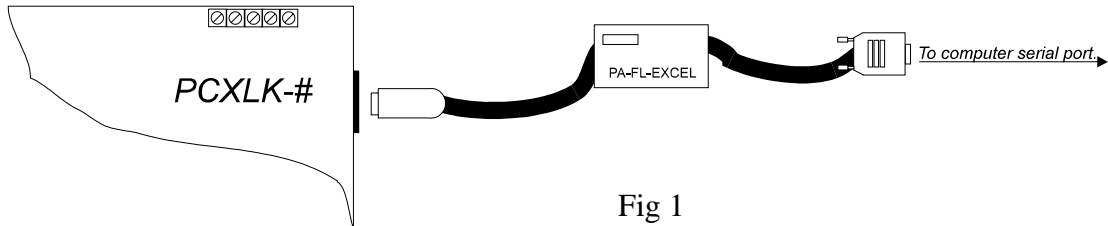
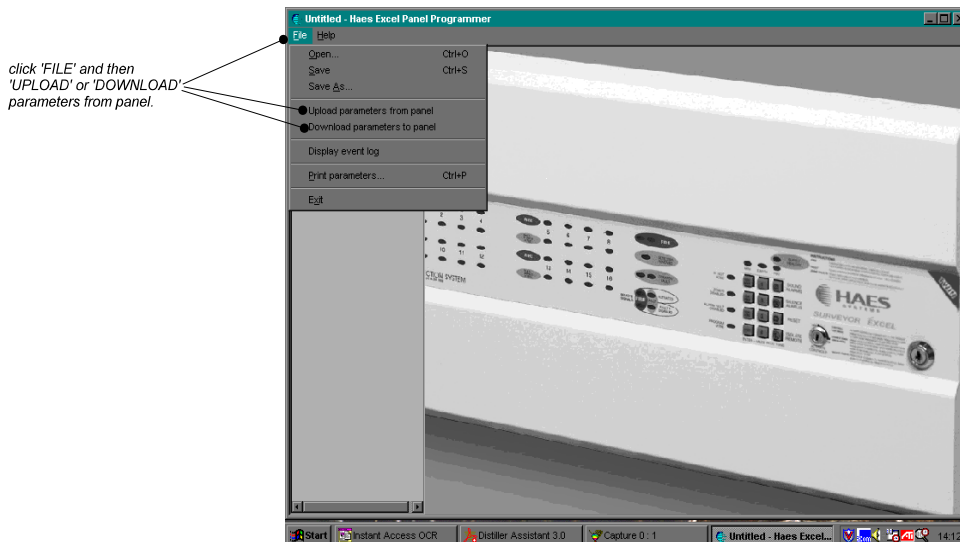


Fig 1

1. Move PMODE switch to the ON position.
2. Turn the 'Activate Controls' keyswitch to ON
3. Enter code **4 1 4 1**
4. Press **ENTER** button

Follow on screen instructions to download parameters.



When finished, press reset once and return PMODE switch to off position.

For installation and use of software, see instructions enclosed with SW-XLK-WIN, software and download kit.